



# TORRENS RIVER

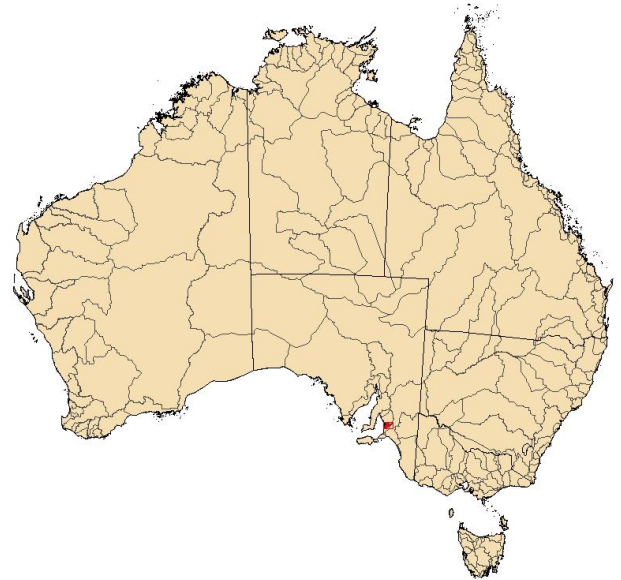
## River Basin Summary



**Population (2006):**<sup>1</sup> 821,356  
**Major Towns:**<sup>1</sup> Adelaide, Birdwood  
**Major Rivers:**<sup>2</sup> River Torrens, Little Para River, River Sturt

**Surface Water Storages:**<sup>2, 3, 4</sup>  
 Largest known storages: Little Para, Kangaroo Creek  
 No. of storages: 9  
 Storage capacity (ML): 63,484

**Licensed Irrigation:**  
 Largest areas:<sup>3</sup> None  
 Number of licenses:<sup>5</sup> n/a  
 Average annual allocation (ML):  
     Since 1996-97: n/a  
     Minimum: n/a  
     Maximum: n/a  
 Average annual diversion (ML):  
     Since 1996-97: n/a  
     Minimum: n/a  
     Maximum: n/a

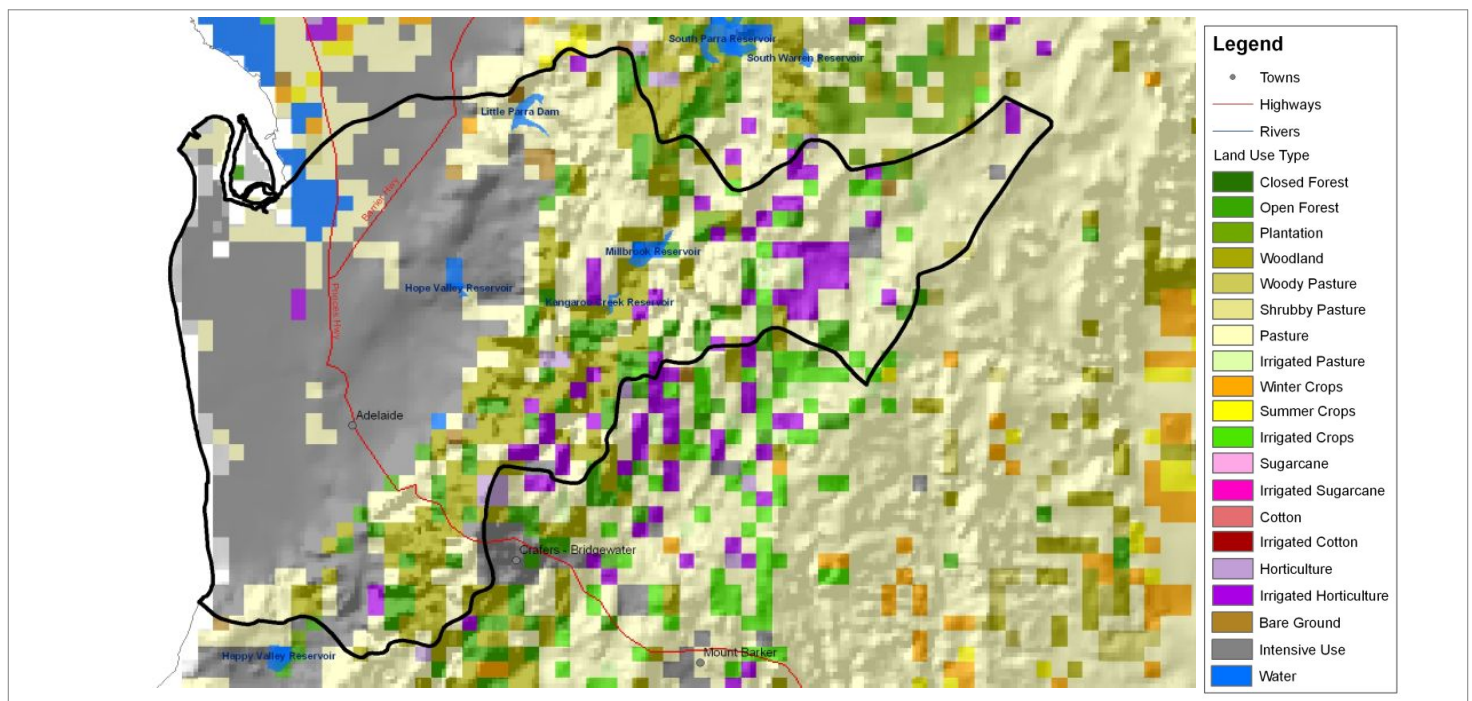


**Groundwater:**  
 Number of production bores:<sup>7</sup> 11,296  
 Recharge rate (mm/year):<sup>8</sup> Data being compiled  
 Yield (ML/year):<sup>8</sup> Data being compiled  
 Extraction (ML/year):<sup>7</sup> Data being compiled

**Rainfall Reliability:**  
 Chance of receiving average seasonal rainfall:<sup>8</sup> Medium (4.5 to 5 yrs in 10)

<sup>1</sup> Australian Bureau of Statistics (2006); <sup>2</sup> Geosciences Australia (1999); <sup>3</sup> National Land and Water Resources Audit (2000); <sup>4</sup> Australian National Committee on Large Dams (2004); <sup>5</sup> Australian National Committee - International Commission on Irrigation and Drainage (2005); <sup>6</sup> Murray Darling Basin Commission (2005); <sup>7</sup> State Agencies (2006); <sup>8</sup> Bureau of Rural Sciences (2007); <sup>x</sup> Incomplete

n/a = Not available



## TORRENS RIVER

### Modelled Annual Water Balance

Land Use Type	Area (sqkm)	Precipitation (ML)	Runoff (ML)	ET (ML)	Deep drainage (ML)	Irrigation (ML)	Return flow (ML)
Closed Forest	0	0	0	0	0	0	0
Open Forest	67	53,296	2,522	50,004	770	0	0
Plantation	8	6,565	231	6,239	94	0	0
Woodland	131	106,057	9,171	95,339	1,548	0	0
Woody Pasture	2	1,697	230	1,442	25	0	0
Shrubby Pasture	1	442	11	424	7	0	0
Pasture	361	256,346	32,987	219,597	3,762	0	0
Irrigated Pasture	11	8,363	1,149	7,091	123	4,842	317
Winter Crops	1	568	32	511	25	0	0
Summer / Fodder Crops	0	0	0	0	0	0	0
Irrigated Crops	9	7,242	794	6,135	313	3,780	200
Sugarcane	0	0	0	0	0	0	0
Irrigated Sugarcane	0	0	0	0	0	0	0
Cotton	0	0	0	0	0	0	0
Irrigated Cotton	0	0	0	0	0	0	0
Horticulture	5	4,586	476	4,043	67	0	0
Irrigated Horticulture	54	43,370	3,050	39,698	623	20,592	339
Bare Ground	7	4,406	728	3,613	65	0	0
Intensive Use	419	219,906	21,767	194,941	3,198	0	0
Water	17	8,469	883	7,453	133	0	0
<b>Entire Basin</b>	<b>1,131</b>	<b>737,598</b>	<b>74,033</b>	<b>652,813</b>	<b>10,752</b>	<b>29,214</b>	<b>855</b>
<b>NLWRA<sup>1</sup></b>	<b>870</b>	<b>n/a</b>	<b>145,600</b>	<b>n/a</b>	<b>n/a</b>	<b>6,448</b>	<b>n/a</b>
<b>AWRC<sup>2</sup></b>	<b>1,190</b>	<b>n/a</b>	<b>60,000</b>	<b>n/a</b>	<b>n/a</b>	<b>n/a</b>	<b>n/a</b>

Data Sources: Land use data sourced from the Bureau of Rural Sciences. Precipitation data sourced from the Australian Bureau of Meteorology. All other data derived from the Bureau of Rural Sciences' steady-state annual water balance model.

<sup>1</sup>National Land and Water Resources Audit (2000); <sup>2</sup>Australian Water Resource Council (1987); n/a = Not available

# TORRENS RIVER

## Average Annual Water Resource Summary (GL)

### Water Supply

Runoff: <sup>1</sup>	74
Transfers: <sup>1, 2</sup>	61
Groundwater Sustainable Yield: <sup>3</sup>	12
<b>Total:</b>	<b>147</b>

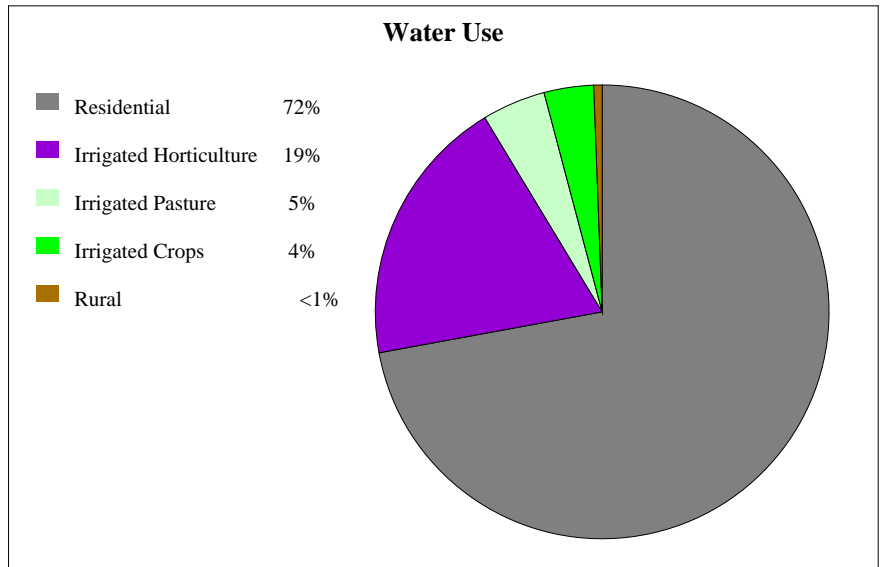
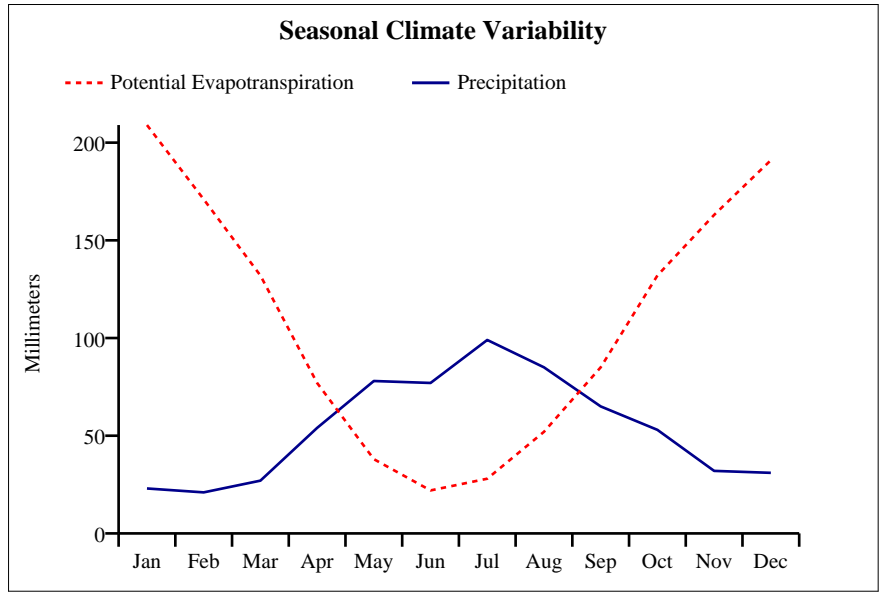
### Water Use

Irrigation: <sup>1</sup>	29
Residential: <sup>1</sup>	77
Commercial/Industrial: <sup>3</sup>	0
Rural (Stock/Domestic): <sup>3</sup>	<1
Transfers: <sup>1, 2</sup>	0
<b>Total:</b>	<b>107</b>

**Total Use (% of Supply):** 73%

### River Flows

Retained in Storage: <sup>~</sup>	3
Environmental Flows:	Data being compiled
Transmission Losses: <sup>^</sup>	19
Return Flows: <sup>1</sup>	47
<b>Outflow:<sup>@</sup></b>	<b>92</b>



<sup>1</sup>Bureau of Rural Sciences (2007); <sup>2</sup>Australian Water Resource Council (1987); <sup>3</sup>National Land and Water Resources Audit (2000)

<sup>#</sup>Groundwater only; <sup>\*</sup>Surface water only; <sup>~</sup>5% of total storage; <sup>^</sup>25% of runoff; <sup>x</sup>incomplete

<sup>@</sup>Surface water (supply - use - retention in storage - transmission losses + environmental flows + return flows)

n/a = Not available