



FORTH RIVER

River Basin Summary



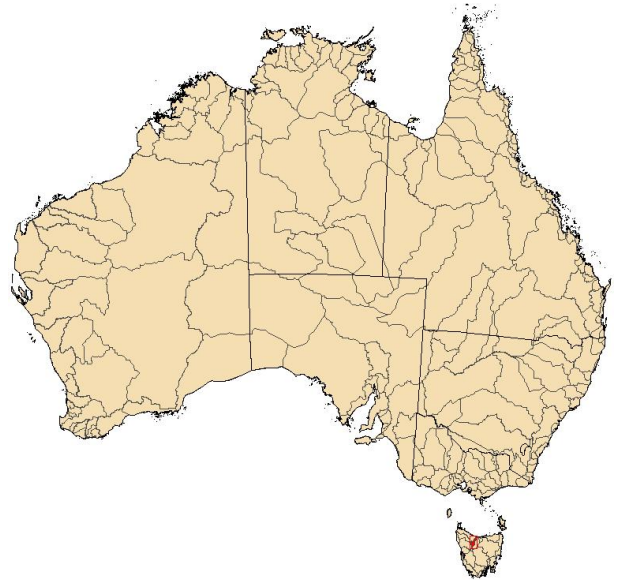
Population (2006):¹ 3,055
Major Towns:¹ Turners Beach, Forth
Major Rivers:² River Forth, Wilmot River, Dove River

Surface Water Storages:^{2, 3, 4}

Largest known storages: Devils Gate (Lake Barrington), Cethana
 No. of storages: 4
 Storage capacity (ML): 317,000

Licensed Irrigation:

Largest areas:³ None
 Number of licenses:⁵ n/a
 Average annual allocation (ML):
 Since 1996-97: n/a
 Minimum: n/a
 Maximum: n/a
 Average annual diversion (ML):
 Since 1996-97: n/a
 Minimum: n/a
 Maximum: n/a



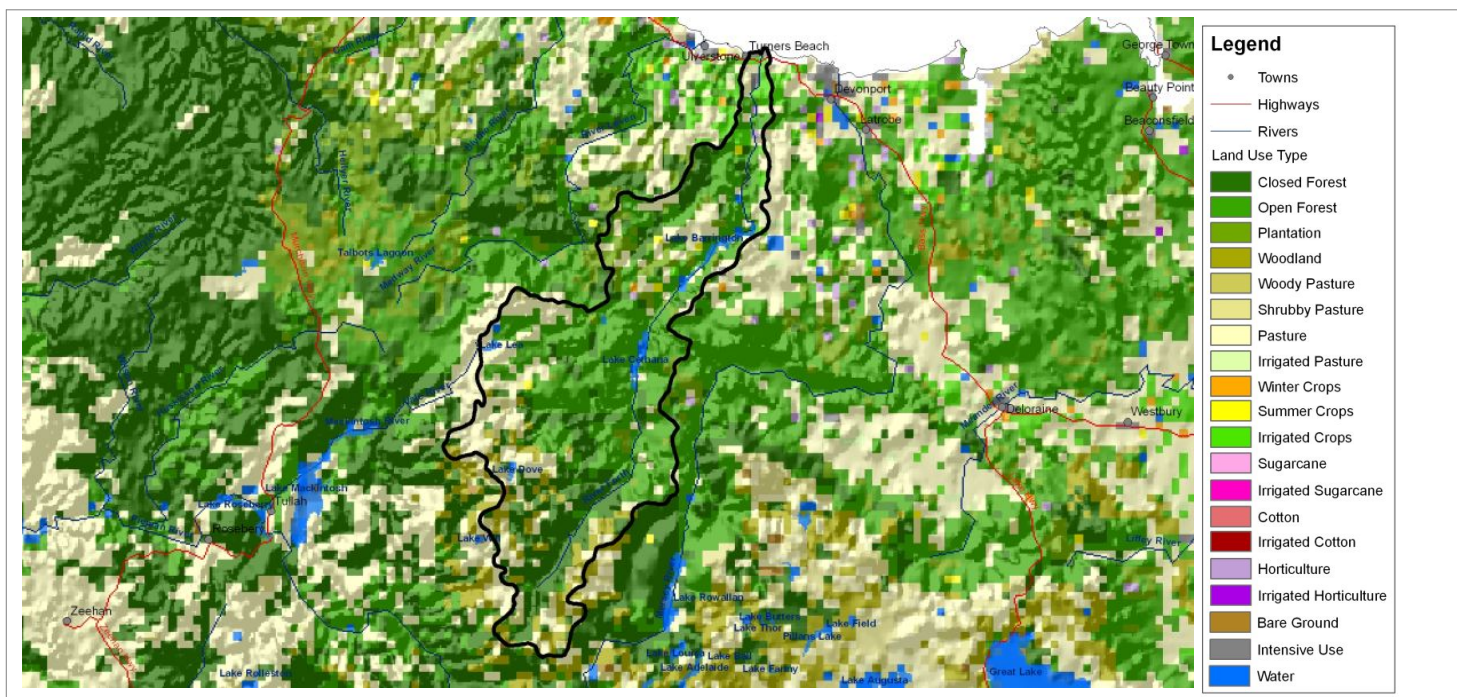
Groundwater:

Number of production bores:⁷ Data being compiled
 Recharge rate (mm/year):⁸ Data being compiled
 Yield (ML/year):⁸ Data being compiled
 Extraction (ML/year):⁷ Data being compiled

Rainfall Reliability:

Chance of receiving average seasonal rainfall:⁸ Medium (4.5 to 5 yrs in 10)

¹ Australian Bureau of Statistics (2006); ² Geosciences Australia (1999); ³ National Land and Water Resources Audit (2000); ⁴ Australian National Committee on Large Dams (2004); ⁵ Australian National Committee - International Commission on Irrigation and Drainage (2005); ⁶ Murray Darling Basin Commission (2005); ⁷ State Agencies (2006); ⁸ Bureau of Rural Sciences (2007); ^x Incomplete



FORTH RIVER

Modelled Annual Water Balance

Land Use Type	Area (sqkm)	Precipitation (ML)	Runoff (ML)	ET (ML)	Deep drainage (ML)	Irrigation (ML)	Return flow (ML)
Closed Forest	254	535,784	323,661	203,564	8,559	0	0
Open Forest	447	808,012	426,112	369,092	12,807	0	0
Plantation	54	81,945	34,585	46,100	1,259	0	0
Woodland	73	185,817	128,105	54,813	2,899	0	0
Woody Pasture	0	0	0	0	0	0	0
Shrubby Pasture	36	96,213	68,812	25,908	1,494	0	0
Pasture	221	461,203	296,053	157,995	7,155	0	0
Irrigated Pasture	2	2,317	885	1,398	33	376	16
Winter Crops	1	1,742	929	735	78	0	0
Summer / Fodder Crops	5	7,709	3,682	3,664	363	0	0
Irrigated Crops	20	21,242	6,502	13,747	992	3,991	186
Sugarcane	0	0	0	0	0	0	0
Irrigated Sugarcane	0	0	0	0	0	0	0
Cotton	0	0	0	0	0	0	0
Irrigated Cotton	0	0	0	0	0	0	0
Horticulture	3	3,575	1,166	2,355	53	0	0
Irrigated Horticulture	0	0	0	0	0	0	0
Bare Ground	1	2,936	2,237	654	45	0	0
Intensive Use	5	5,177	1,962	3,133	82	0	0
Water	9	14,758	8,513	6,012	234	0	0
Entire Basin	1,131	2,228,428	1,303,204	889,170	36,053	4,367	202
NLWRA¹	1,124	n/a	2,106,521	n/a	n/a	3,988	n/a
AWRC²	1,130	n/a	1,300,000	n/a	n/a	n/a	n/a

Data Sources: Land use data sourced from the Bureau of Rural Sciences. Precipitation data sourced from the Australian Bureau of Meteorology. All other data derived from the Bureau of Rural Sciences' steady-state annual water balance model.

¹National Land and Water Resources Audit (2000); ²Australian Water Resource Council (1987); n/a = Not available

FORTH RIVER

Average Annual Water Resource Summary (GL)

Water Supply

Runoff: ¹	1,303
Transfers: ^{1, 2}	830
Groundwater Sustainable Yield: ³	52
Total:	2,185

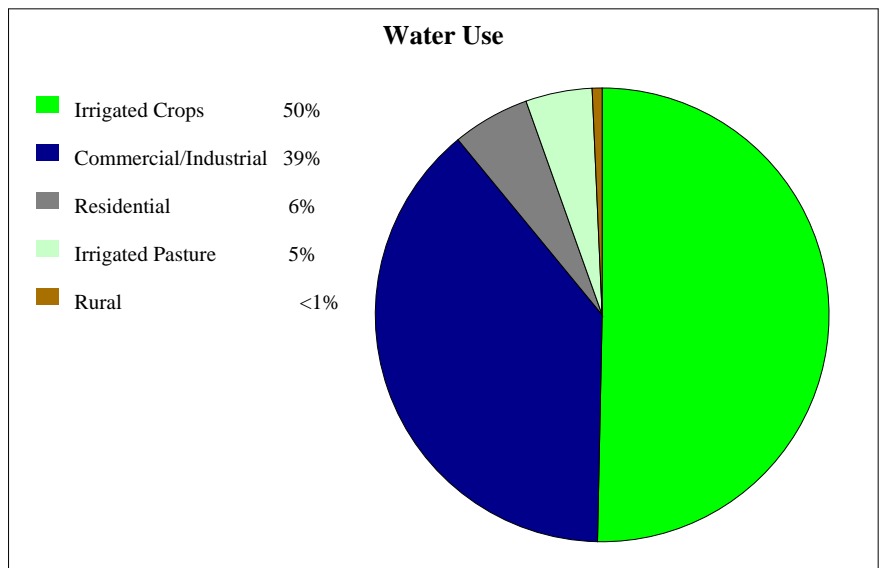
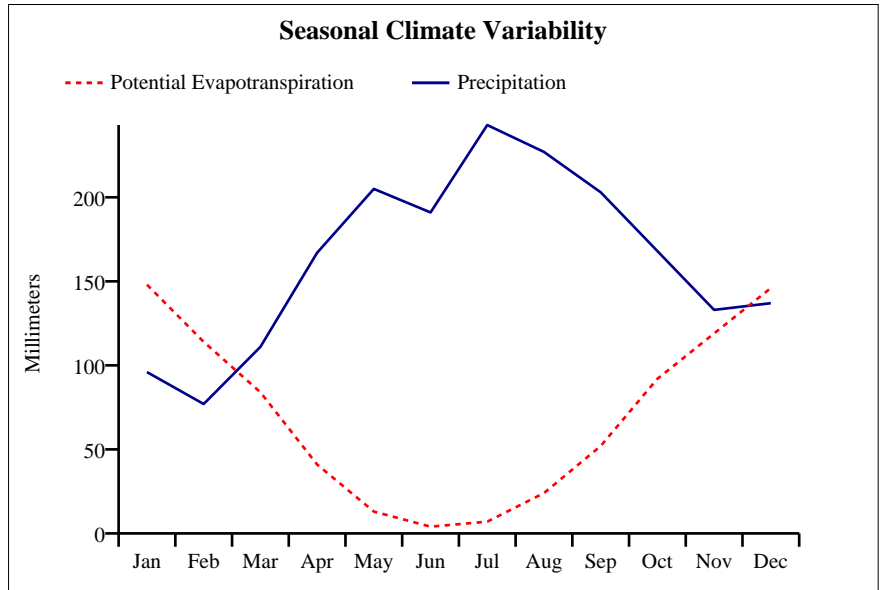
Water Use

Irrigation: ¹	4
Residential: ¹	<1
Commercial/Industrial: ³	3
Rural (Stock/Domestic): ³	<1
Transfers: ^{1, 2}	0
Total:	8

Total Use (% of Supply): <1%

River Flows

Retained in Storage: [~]	16
Environmental Flows:	Data being compiled
Transmission Losses: [^]	326
Return Flows: ¹	<1
Outflow:[@]	1,784



¹Bureau of Rural Sciences (2007); ²Australian Water Resource Council (1987); ³National Land and Water Resources Audit (2000)

[#]Groundwater only; ^{*}Surface water only; [~]5% of total storage; [^]25% of runoff; ^xincomplete

[@]Surface water (supply - use - retention in storage - transmission losses + environmental flows + return flows)

n/a = Not available