

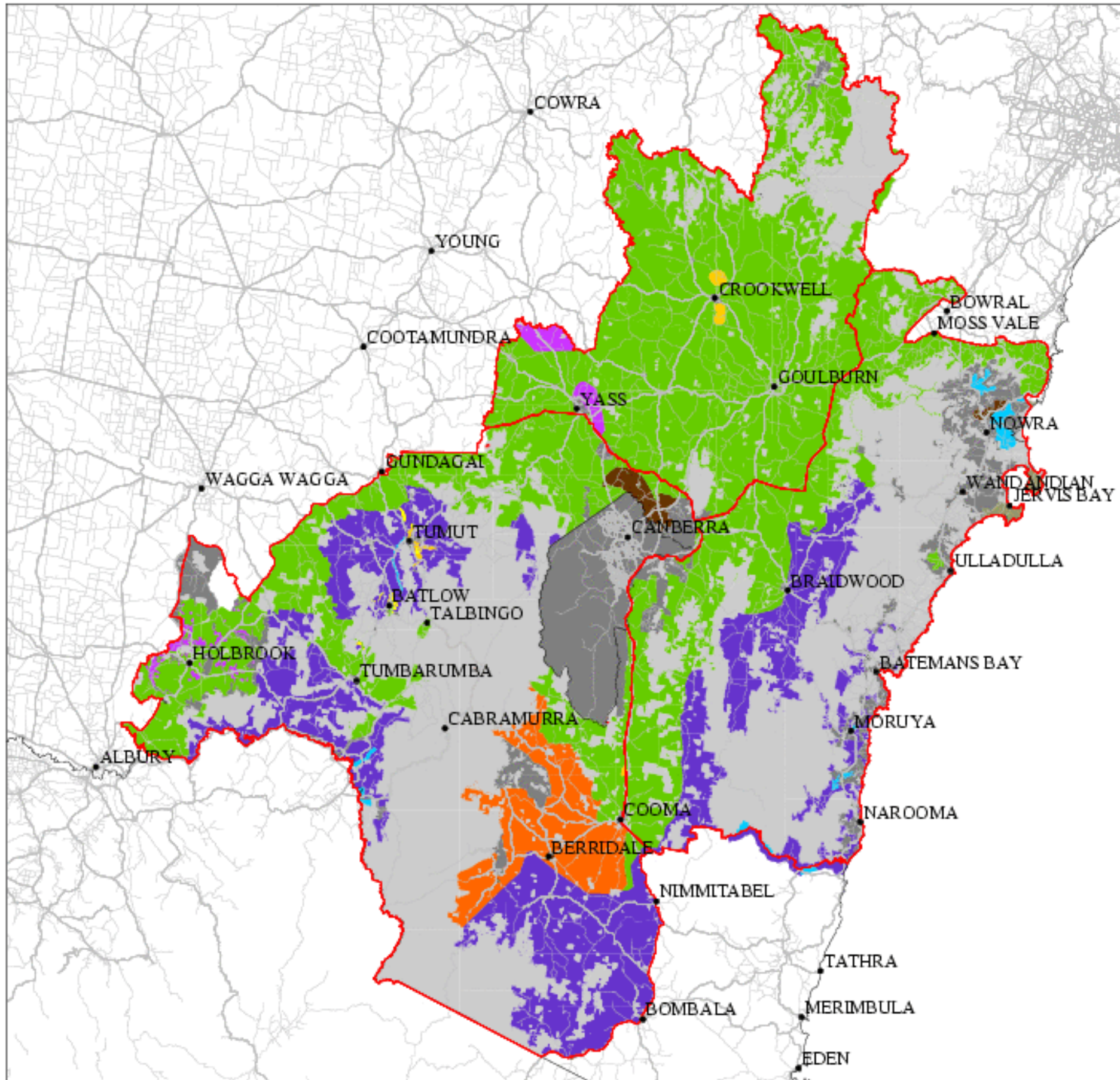
# Southern New South Wales Comprehensive Regional Assessment

## Southern CRA Region Land Use

### Key:

- Major roads (AUSLIG TOPO250)
- Minor roads (AUSLIG TOPO250)
- Southern CRA region boundary (as at 2 June 1999)
- Selected towns (AUSLIG TOPO250)

- Coastal Grazing
- Dairying
- Cattle Grazing
- Mixed Grazing
- Sheep Grazing
- Horticulture
- Intensive Cropping
- Extensive Cropping
- Public Land
- Rural Residential
- Private Land (undifferentiated)
- Not Available
- Unknown



Produced by Fisheries and Forestry, BRS.

Version: 13 December, 1999

Map projection - AMG Zone 55

Contact - M. Ryan, (02) 6272 4937, michael.f.ryan@brs.gov.au

Ref.1 : /data/forest/cra/nsw/south/plantation/suitability/landuse/plots/plc260.lu.xml

Ref.2 : /data/forest/cra/nsw/south/plantation/suitability/landuse/plots/indus\_ex.xml

