

# Marine Matters

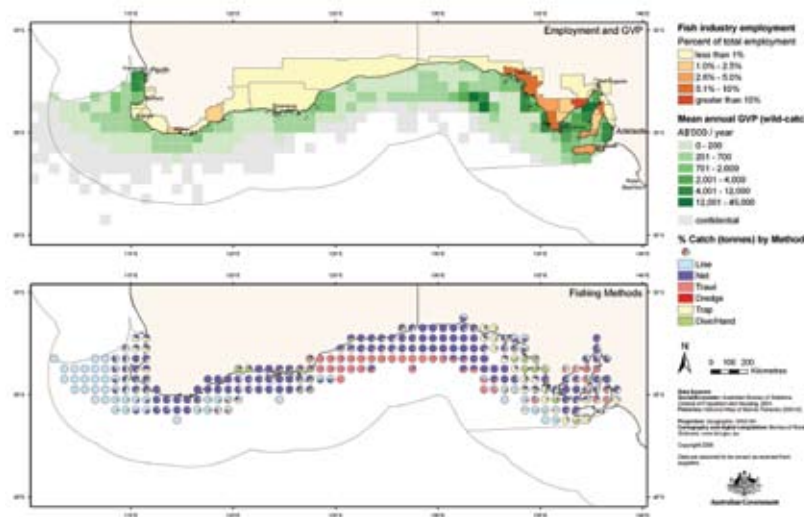
## THE ATLAS OF AUSTRALIAN MARINE FISHING AND COASTAL COMMUNITIES

Information on Australian fisheries and the communities that rely on fishing activity.

# South Western Region

### Area

The Region extends from Kangaroo Island, South Australia westward across the Great Australian Bight around Cape Leeuwin to Perth, Western Australia.



### Population

The Region has a population of approximately 774,330 people.

### Importance of Fishing Related Activity

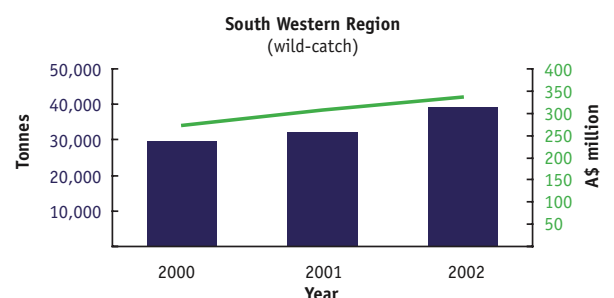
Commercial fishing employment, including aquaculture, is largely concentrated across the Eyre Peninsula, where almost all coastal towns have strong linkages to commercial fishing activities. For instance, the town of Port Lincoln has the largest number and proportion of people employed within the fishing sector of any coastal town in Australia.

### Key Commercial Fisheries

Major commercial fisheries in the Region include: South Australian prawn trawl fisheries, abalone dive and rock lobster trap fisheries (South Australia and Western Australia); Great Australian Bight trawl fishery (Australian Government); southern bluefin tuna net fishery (Australian Government); and net fisheries for small pelagic species (South Australia and Australian Government).

### Economic Value of Fisheries

The total commercial wild-catch fisheries production for the Region in 2002 was estimated at 39,500 tonnes with a gross value of production (GVP) of \$335m.





# Marine Matters

## THE ATLAS OF AUSTRALIAN MARINE FISHING AND COASTAL COMMUNITIES

Information on Australian fisheries and the communities that rely on fishing activity.

### Where are the fish and who's catching them?

Fishing activity makes a vital contribution to Australia's economy and is important to the social fabric of many coastal communities.

The Atlas of Australian Marine Fishing and Coastal Communities is the first comprehensive national overview of fishing activity in Australia.

The Atlas shows where fish are caught in Australia, the value of those catches, where different fishing gears are used and the species that are taken. It also provides information on the socio-economic characteristics of coastal communities in eight Marine Regions around Australia.

The Atlas includes two products – a hard copy version and a companion website featuring an interactive online mapping system.

[www.brs.gov.au/fishcoast](http://www.brs.gov.au/fishcoast)

### DID YOU KNOW?

- The Australian Fishing Zone covers nine million square kilometres, and extends 200 nautical miles from shore.
- The Zone takes in tropical to subantarctic waters and reaches one quarter of the globe – from the Indian Ocean in the west to the Pacific Ocean in the east.
- High value fisheries include southern bluefin tuna in the Great Australian Bight, rock lobster off Western Australia and abalone in south western Tasmania.
- Rock lobster accounts for nearly one third of the GVP of all Australian wild-catch commercial fisheries, at \$390 million. Prawns are second, with a GVP of \$93 million which is 20% of the GVP total.
- Commercial fishing, aquaculture, fish processing and wholesaling are important to local communities, particularly in more remote regions.
- Gone Fishing? You're not alone. 3.36 million people, or 19.5% of the population over the age of five years, fish recreationally at least once each year. Participation rates are highest in the Northern Territory, Western Australia and Tasmania.

Telephone +61 2 6272 4282

Facsimile + 61 26272 4747

Email [info@brs.gov.au](mailto:info@brs.gov.au)

Publication sales 1800 020 157

Download free BRS publications and purchase products at [www.brs.gov.au/shop](http://www.brs.gov.au/shop)