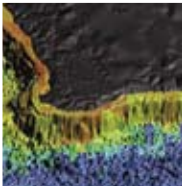




# Marine Matters

## THE ATLAS OF AUSTRALIAN MARINE FISHING AND COASTAL COMMUNITIES

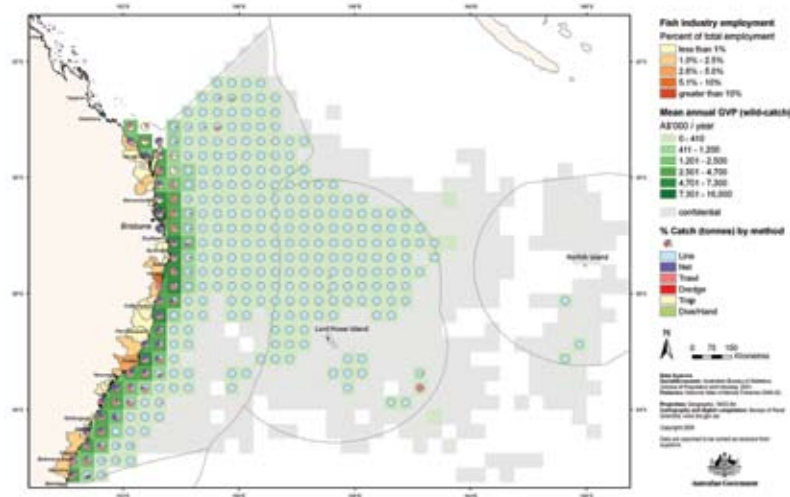
Information on Australian fisheries and the communities that rely on fishing activity.



# Eastern Central Region

### Area

The Region extends along the eastern seaboard from Seventeen Seventy, Queensland through to Bermagui, New South Wales. The Region includes Norfolk Island, which is located in the Pacific Ocean, 1400 kilometres east of Brisbane.



### Population

It is the most densely populated and urbanised of any Marine Region, with approximately 2,702,900 people. One third of the Region's population lives in the coastal Metropolitan New South Wales and Queensland areas and almost half in the large coastal Non-metropolitan centres such as Newcastle, Wollongong, Gold Coast and Bundaberg. Norfolk Island has a population of about 400.

### Importance of Fishing Related Activity

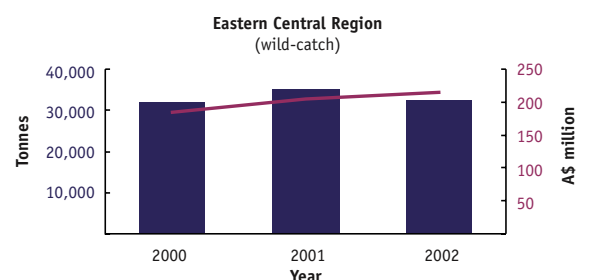
Employment in the various fish industry sectors (commercial fishing including aquaculture, fish wholesaling and processing sectors) is widely scattered throughout the Region, numerically larger across large urban settlements, but proportionally larger across medium to small-sized communities.

### Key Commercial Fisheries

Major commercial fisheries in this Region include: prawn trawl fisheries (Queensland and New South Wales); offshore pelagic longlining for tuna and billfish (Australian Government); finfish trawl fisheries (Australian Government and New South Wales); abalone dive and rock lobster trap fisheries in the south of the Region (New South Wales); and inshore and estuarine fisheries for crabs and finfish using trap, line and net methods (Queensland and New South Wales).

### Economic Value of Fisheries

The Eastern Central Region's commercial wild-catch fisheries production in 2002 is estimated at 31,500 tonnes with a GVP of \$215m. Norfolk Island's commercial fisheries production in 2002 is estimated at 1500 tonnes with a gross value of production (GVP) of \$18m.





# Marine Matters

## THE ATLAS OF AUSTRALIAN MARINE FISHING AND COASTAL COMMUNITIES

Information on Australian fisheries and the communities that rely on fishing activity.

### Where are the fish and who's catching them?

Fishing activity makes a vital contribution to Australia's economy and is important to the social fabric of many coastal communities.

The Atlas of Australian Marine Fishing and Coastal Communities is the first comprehensive national overview of fishing activity in Australia.

The Atlas shows where fish are caught in Australia, the value of those catches, where different fishing gears are used and the species that are taken. It also provides information on the socio-economic characteristics of coastal communities in eight Marine Regions around Australia.

The Atlas includes two products – a hard copy version and a companion website featuring an interactive online mapping system.

[www.brs.gov.au/fishcoast](http://www.brs.gov.au/fishcoast)

### DID YOU KNOW?

- The Australian Fishing Zone covers nine million square kilometres, and extends 200 nautical miles from shore.
- The Zone takes in tropical to subantarctic waters and reaches one quarter of the globe – from the Indian Ocean in the west to the Pacific Ocean in the east.
- High value fisheries include southern bluefin tuna in the Great Australian Bight, rock lobster off Western Australia and abalone in south western Tasmania.
- Rock lobster accounts for nearly one third of the GVP of all Australian wild-catch commercial fisheries, at \$390 million. Prawns are second, with a GVP of \$93 million which is 20% of the GVP total.
- Commercial fishing, aquaculture, fish processing and wholesaling are important to local communities, particularly in more remote regions.
- Gone Fishing? You're not alone. 3.36 million people, or 19.5% of the population over the age of five years, fish recreationally at least once each year. Participation rates are highest in the Northern Territory, Western Australia and Tasmania.

Telephone +61 2 6272 4282

Facsimile + 61 26272 4747

Email [info@brs.gov.au](mailto:info@brs.gov.au)

Publication sales 1800 020 157

Download free BRS publications and purchase products at [www.brs.gov.au/shop](http://www.brs.gov.au/shop)