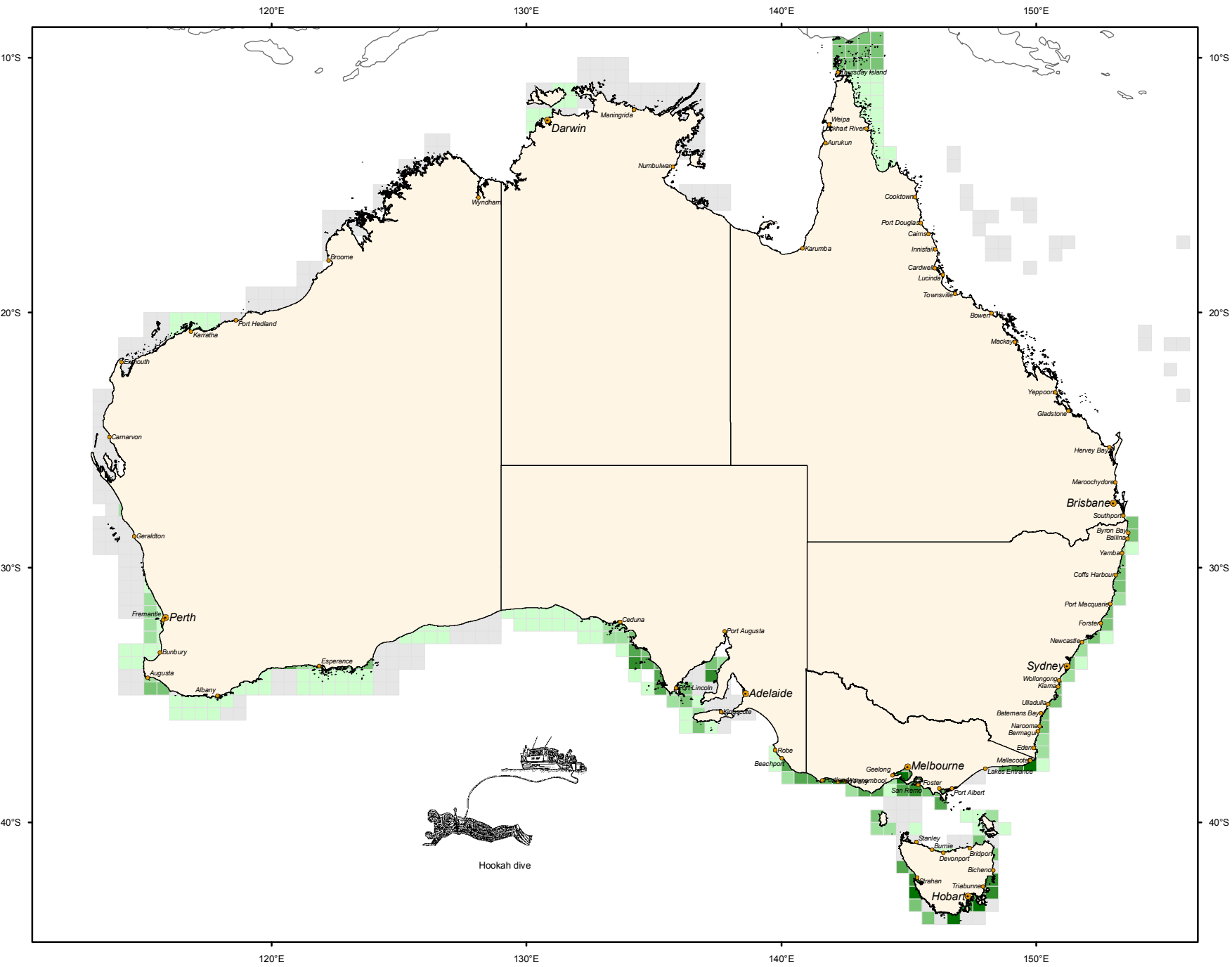


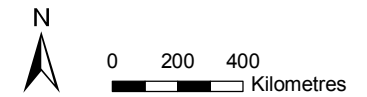
Dive and hand collection fisheries – Commercial GVP



Mean annual GVP (2000-02)

A\$'000 / year

- 0 - 230
- 231 - 670
- 671 - 1,500
- 1,501 - 3,300
- 3,301 - 6,200
- 6,201 - 11,000
- confidential



Data Source: National Atlas of Marine Fisheries 2000-02.

Projection: Geographic, WGS 84.
 Cartography and digital compilation: Bureau of Rural Sciences. www.brs.gov.au

Copyright 2006

Data are assumed to be correct as received from suppliers.



Australian Government

Fisheries Research & Development Corporation

Department of the Environment and Heritage

Bureau of Rural Sciences